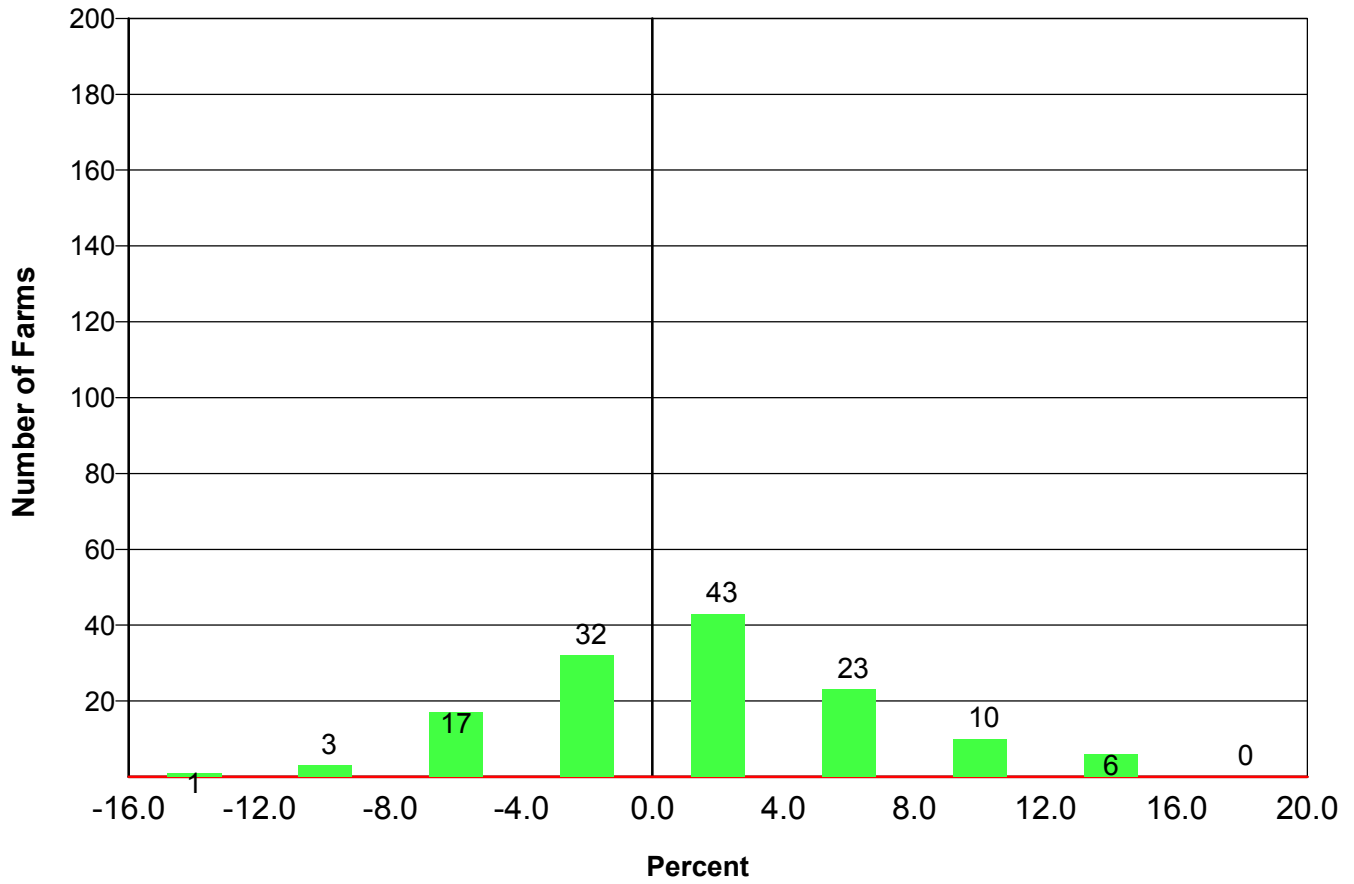




## Summary Statistics Report

### Market Rate of Return on Assets - 2006



# Market Rate of Return on Assets - 2006

---

<b>Benchmark Criteria</b>	2006
Number of Cows	58.95
Pounds of Milk Sold per Cow	17,140
Hundredweight Equivalent (CWT EQ) per Cow	265
Gross Milk Price	\$13.48
Total Crop Acres per Cow	4.61
Pasture Acres per Cow	0.22
Owner/Operator/Families	1.09
Primary Enterprise:	<b>Dairy</b>
Report On:	<b>All Data Sets</b>
2006 Data Sets:	<b>139</b>
Data Sets:	<b>0</b>
Data Sets:	<b>0</b>
Confidence Level Range:	<b>80 to 100</b>
Herd Size Range:	<b>16.0 to 100.0</b>
Milk Production Range:	<b>8254.3 to 20000.0</b>
States:	<b>Wisconsin</b>

---